



COMPANY PROFILE

PT. GAPURAMAS PERKAKAS SAKTIMANDIRI
Direct Factory and Industry Source



"We are dedicated to serving each of our clients based on their unique needs and providing them with tailored solutions to address their supply-related challenges"

INTODUCTION

ABOUT OUR COMPANY

ABOUT US GPS-GAPURAMAS PERKAKAS SAKTIMANDIRI was established and focused on a supply chain of Electrical Power System Solutions with *end-to-end* services, by provided premium quality Power Cables & conductors, heavy-duty Power Generation systems, and Automotive Batteries including all installation works, and after-sales services.



We are a young and dynamic company that was born to develop a new concept of supply-chain of power cables & FR cables, predictable power solution, and Automotive batteries to support our esteemed customers in any industrial sector including installation.

Gapuramas also has been developed as a Direct Factory and Industry Source to support our esteem customers in solving and performing their projects to improve their effectiveness.



100+
PRODUCTS

6 BIG
BRANDS

100%
WARRANTY

INTRODUCTION

ABOUT OUR COMPANY

OUR VALUE Our core value is to enhance the business environment by prioritizing ethical practices and fostering collaboration in the supply of electrical equipment and power solutions.

OUR VISION Our aim is to be your reliable partner in providing electrical and power solutions, enabling you to achieve optimal results through innovative and dependable approaches, while also providing top-notch product support to ensure quality.

OUR MISSION The goal is to become a reliable partner for electrical supplies and power solutions, providing expert services in various areas such as Power Cables & Conductor, Power Generation, Industrial and Automotive Batteries, and its services to enhance productivity in different industrial sectors.



OUR PRODUCTS

CABLES & CONDUCTOR

We procure cables and conductors from three prominent Indonesian companies - KMI- Kabel Metal Indonesia, Kabelindo, and SIK-Sumi Indo Kabel. These companies are recognized for their premium quality cables and established reputation in the market.



FIREPROOF or RESISTANT CABLE
SIK-Sumi-Indo Kabel is a PMA cable company from Sumitomo established in 1982. SIK prioritizes the quality of self-processed copper material to produce excellent quality of electrical conduction. Has various variants and types of LV and MV power cables, especially FRC or fireproof types and data cables. Each type of cable is produced precisely with the supervision of Japanese experts with quality assurance in accordance with JIS, ISO UL and SNI.



WHAT WE DO? PROJECT SUPPORT

GPS-Gapuramas engages in collaborative ventures with construction companies to provide a reliable supply of cables and conductors to support their projects.

SOLUTION PARTNER

Our objective is to provide superior quality copper and aluminum cable solutions to both of commercial and residential customers, while catering to their customized needs.

SIK-Sumi Indo Kabel prioritizes the production of cables with green-material for coating or green insulation (XLPE) such as N2XY, N2XFGbY, N2XBY, etc which is very environmentally friendly and does not cause toxic fumes when a short circuit occurs.

The other brands we provides, KMI- Kabel Metal Indonesia and Kableindo for Standard Low Voltage (LV) and Medium Voltage (MV) cables such as NYY, NYM, NYA, NYAF, NYYHY, NYFGbY, N2XSEBY, N2XSEY, NA2XSY, etc.

Application: Building construction, infrastructure, industry, oil & gas, residential and more.

PREDICTABLE POWER GENERATION



We offer fully assembled diesel power generation systems from Turkiye's AKSA Power Generator, whose manu-facturing plants span across several continents. AKSA Power has earned a distinguished reputation in the international market, operating in over 170 countries since was founded.

DIESEL GENERATOR SETS & SPARE PARTS

With over 20 years of experience, our team specializes in diesel power generator sets. Our services include planning, procurement or supply of genset units, installation work, and after-sales support adhering to the manufacturer's standards.



WHAT WE DO? PREDICTABLE POWER

GPS-Gapuramas is dedicated to providing premium portable power solutions to industrial clients with a commitment to being their trusted power services partner. Whether you require a predictable power supply, we are equipped to deliver. Our portable power unit is designed to cater to industry 4.0 applications and is certified for data center applications uptime.

We source our diesel engines and spare parts from reputable Principals, including Aksa Power and Powerlink from PRC, and Green Power from Italy. Our inventory features only authentic diesel engines from renowned brands such as Cummins, Perkins, Volvo, Scania, and Kubota.

Our diesel engines are suitable for various applications, including small and medium power generation, residential, industrial, plantation, mining, infrastructure, and construction. We offer open and soundproof options, with starting capacities ranging from 10kVA to 3000kVA.

ANTI EXPLODE AUTOMOTIVE BATTERIES

100 %
ANTI EXPLODE
WARRANTY

A battery serves as a crucial driving power source for the effective functioning of your automotive and heavy equipment rental business. Optimal battery performance and quality are essential, and we strive to deliver just that.

Furukawa Battery, a battery manufacturing company with a century-long legacy, is now operating in Indonesia, providing superior quality batteries to consumers.



N150
12V - 150 Ah



Furukawa Battery stands out from other batteries on the market with its unique anti-explode valve design and advanced technology. Available in three types - Conventional, Hybrid, and MF (maintenance-free) - each caters to specific usage requirements. Manufactured using high-end technology and subjected to rigorous quality assurance, every battery unit guarantees optimal power quality and is backed by the manufacturer's warranty. Furukawa Battery finds application in a diverse range of fields, including industrial machinery, gen-sets, and commercial vehicles such as buses and trucks, among others.

THE BATTERY TECHNOLOGY

HI-TECH HEAVY TRUCK BATTERY

Hitec® Heavy Truck Battery, a product of Camel Group Co., Ltd., is extensively utilized in heavy trucks, mining vehicles, and engineering vehicles. The quality and competitive price of Hitec® products, which are manufactured in Malaysia and China, have gained favor among customers from the Middle East, Southeast Asia, Africa, and other regions. Please contact us for additional information on the excellent features of Hitec® Heavy Truck Battery.

HI-TECH HEAVY DUTY STARTER BATTERY

Hi-Tech automotive starter battery offers reliable starting power for your vehicle. Designed to meet the demands of modern vehicles, our starter batteries provide consistent and dependable performance, ensuring a smooth and efficient start every time. With Hi-Tech Battery, you can trust that your vehicle is powered by the best. Hi-Tech automotive starter battery wholesale is widely used in cars, SUVs, minivans, light trucks, heavy truck and other commercial vehicles such as heavy equipment. Contact Us for more information!

Hitec® Heavy Truck Battery

- Leading Duralife technology, extending car battery life.
- High discharge capacity, superior cranking performance, fast ignition.
- Endures through long-distance transportation without worry.
- Stable and vibration resistant, maintenance free. The labyrinth exhaust system ensures good sealing and prevents internal acid from flowing out.
- Active special substances are added to the plate to improve the charge acceptance performance





WITH A 125-YEAR TRACK RECORD AS THE GLOBAL LEADER IN STORED ENERGY SOLUTIONS FOR INDUSTRIAL APPLICATIONS, IT WOULD BE EASY TO PAT OURSELVES ON THE BACK FOR A JOB WELL-DONE. NOTHING COULD BE FARTHER FROM REALITY.

Genesis® NP batteries feature heavy-duty thick lead calcium grids for years of dependable performance. The high energy density design, factory sealed case and leak proof construction ensures that these rechargeable sealed lead acid batteries are extremely reliable and virtually maintenance-free.

Supporting many mission-critical applications

With high energy density, excellent performance in either float or cyclic applications, and long service life, Genesis NP batteries power security systems, emergency lighting and more in a space efficient footprint. Compact, quick and simple to install, Genesis NP batteries require low maintenance and never need watering.

Guaranteed leak proof operation in any position except inverted. Expected life span of three to five years in float service applications and Operation in a broad range of ambient temperatures. Recovery capabilities even after deep discharges.

PROFESSIONAL UPS BATTERY



PROJECT MILESTONES

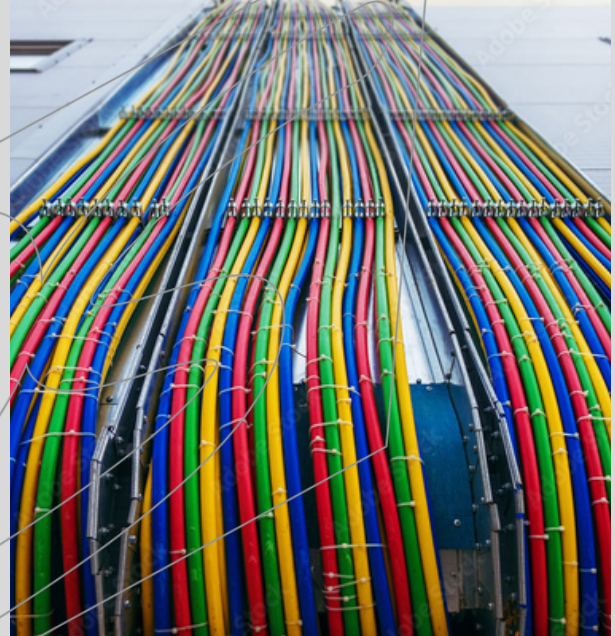
OUR WORK

ABOUT THE PROJECT

Our focus lies in the installation of mechanical and electrical systems for construction and building projects. We aim to assist our clients in achieving their goals by providing solutions for the supplies of electrical power cables and conductors, power generation systems, and other related systems and installation. Our services include design support, material specification, pricing estimation, supplies, and installation for cable works and power generation systems. We have a track record of successful projects, including :

- PT. HLI - Electrical Vehicles Battery industry,
- PT. Unilever Indonesia Plant,
- PT. Pindodeli -Papermills
- MCP Shopping Mall, Medan.
- the Telecommunication Industry, and several government projects.

We collaborate with our clients' ME partners or directly with the Main-Cont to provide premium cables and conductors to finalize their electrical installations.



BATTERIES MILESTONE



FB-Furukawa Battery is a well-established player in the automotive battery market, renowned for its exceptional performance and **anti-explosion warranty**. The superior quality of FB products can be attributed to the application of FB Japan structure technology in every product. With a rich history as a trusted Japanese automotive battery, FB batteries are compatible with all Japanese cars and meet the Japan Brands heavy-equipment standard supply, complete with factory warranty support.

Hi-Tech Battery, on the other hand, specializes in SMF-*Sealed Maintenance Free batteries* catering to both luxury cars and heavy-duty vehicles, military cars, and heavy equipment with prolonged battery life. The **Hi-Tec Heavy Truck Battery** is also the OEM battery with high-range CCA standard for some of the most prominent European and American heavy equipment brands, serving as the standard supply. All Hi-Tech products are covered with a 12-month full factory warranty support.



THANK YOU FOR YOUR APPRECIATE

Welcome any projects inquiries for Cables & conductor, power Generation, and Automotive batteries.

CONTACT US :



PT. GAPURAMAS PERKAKAS SAKTIMANDIRI



Call
021-5060 9977



Address
Ruko Bulevar Hijau Blok B-8 No. 17,
Jl. Raya Bulevar - Kota Harapan Indah,
Medan Satria - Kodya BEKASI 17131



Mail
hello@gps-gapuramas.com



Web Adress
www.gps-gapuramas.com

WANTED : Battery Re-Seller for Heavy Equipment, Commercial Truck & Bus in any areas in Jawa-Kalimantan-Sulawesi- Bali Palembang (Terms &Conditions applied)